

SERIES E50 MINIATURE EXPLOSION PROOF VALVES!

Meet today's demands for economy of space and energy consumption. For hazardous locations.

APPLICATION:

General purpose or safety valves for pneumatic and hydraulic applications. The versatility of these valves is increased to include the handling of hot air, hot water, refrigerants and many other media, by the use of different seals.

SPECIFICATIONS— OPERATING CONDITIONS

Media: Air and other fluids, compatible with standard Buna seals. Hot water, steam, gasoline, oils, some hydraulic fluids, and many other media require special seal materials - Consult representative or factory.

Valve Temperature Range: Standard Valves - 0°F (- 18°C) to 104°F (40°C) ambient; 0°F (- 18°C) to 150°F (65°C) media. Optional Valves - can tolerate much higher or much lower ambient and media temperatures. Consult factory for specifications.

Maximum Operating Pressure Differentials: See catalog listings

Burst Pressure: 5000 PSI

Leakage: Bubble tight for standard valves

Vacuum: To 5 Microns - Consult factory

ELECTRICAL CHARACTERISTICS

Coil Voltage: 5.4 to 575 VAC 50-60 HZ. —3.0 to 300 VDC. All standard voltages (U.S. & Export) carried in stock. Special voltages readily produced on order.

Nominal Power:	A.C. VALVES		
	D.C. Valves	2 WNC Valves	3 Way & 2 WNO Valves
	7.2 Watts	4.0 Watts	5.6Watts

Coil Construction: Standard, Molded with 24" leads. For Non-molded construction consult Factory.

Typical Response Time on Air: 4-16 Milliseconds

Operating Speed: Up to 600 CPM

Duty Cycle: Continuous or Intermittent

MECHANICAL CHARACTERISTICS

Material: All interior parts are stainless steel

Orifice Diameter: See catalog listings

Porting: 1/8 NPT

Housing: Explosionproof construction with 1/2 NPT conduit connection and third wire ground.

Available in stainless steel (consult factory)

Listings: Valves are U.L. Listed and CSA Certified for Hazardous Locations—Class I, Div 1, Group C and D - Class II, Div 1, Groups E, F, and G; Div 2 Groups A,B,C,D,E,F, and G.

Life expectancy: Millions of cycles, depending on application, lubrication, etc.

Valve Weight: Only .65 lbs average

Repair Packs: Consult Factory

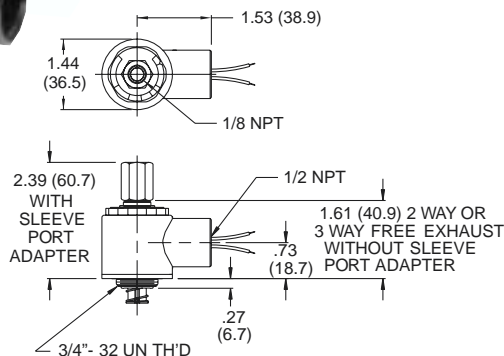
OPTIONS: Also available in all stainless steel construction

Metering, bottom orifice or cavity porting, manifold mount, built in muffler, universal mounting bracket, potted coil, Class H molded coil.

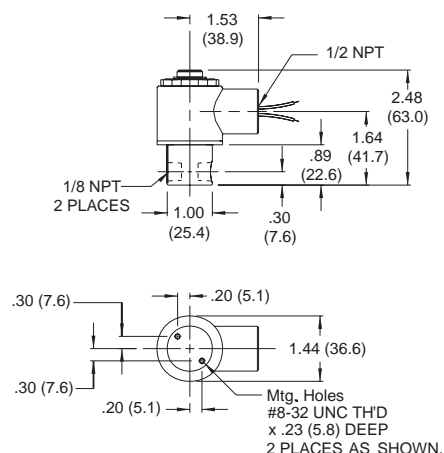
FOR FLOW CHARTS SEE PAGES 95-97

MINIATURE EXPLOSION-PROOF SOLENOID VALVE OPERATORS

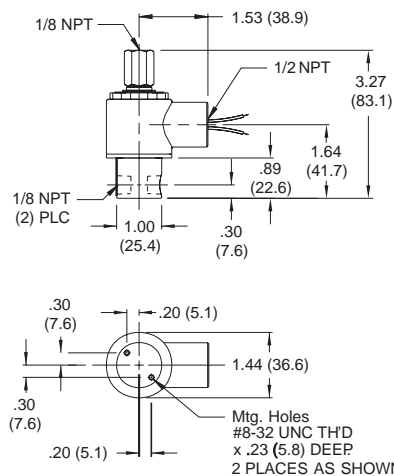
A complete line of valve operators for O.E.M. applications are offered for those who wish to incorporate them in their own product line. Full technical information and details are available from Peter Paul.



Operator



**2-Way Normally Closed and
3-Way Normally Closed
Exhaust to Atmosphere**



**3-Way Normally Closed
Piped Exhaust**